



i-POS

Compatibility with various applications and strong durability

- Mass storage memory and storage device
- Eco friendly design with no noise and low heat
- Reduced electricity power rate with 4W of ultra-low power consumption
- All-in-one POS terminal with all necessary elements put together
- Minimized board damage by applying separable power (AC adaptor)



i-1500



i-9000



Practical and Reasonable POS System, i-POS

Compared to the previous POS systems with mono tone color and box type design, i-POS introduces its user friendly and useful design to the market. Especially i-POS, it firstly adopts the true-flat display to the POS terminal in Korea which also goes with smart device such as smart phone or tablet PC. Since its convenience, i-POS was chosen as the representative POS terminal for EXPO 2012 YEosu KOREA and more than 200 units were successfully operated in many stores and restaurants during this period.



Product reliability & safety

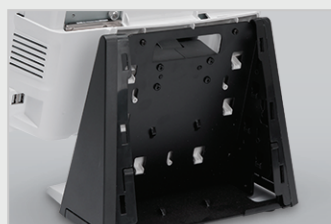
Proven product reliability and safety through EMC test, KC, CE and FCC by Authorized Testing and Certification Bodies

Green IT

Intel Atom processor offers low power consumption.
Low energy consumption can reduce unnecessary heat and expand the life span of POS components.



I/O Ports placed on the top of the panel allow you to easily install and maintain



Space for tidy cabling



VFD (20 columns x 2 lines)



CCTV camera connection available

Specifications

Item	Specification	
CPU	Intel	Intel® Celeron® J1900 (2M Cache, 2.42 GHz)
Main	Memory	DDR3 SODIMM 2GB (up to 8GB) / 4GB Standard, DDR4-2133, Socket 1 x SODIMM (Max 8GB)
	Storage	2.5" SATA- II 500GB HDD & SSD(64GB/128GB)
Primary Display	LCD	15-inch TFT LCD (250cd), W / LED Back-light, LVDS Interface
	Resolution	1024 x 768
	Touch	15-inch 5-wire Resistive(i/z-9000 PCAP Touch), Serial interface
	Speaker	1 x 1W
	USB	6 x USB (Rear: 4 x USB, Side: 2 x USB)
	Serial	4 x RS-232C (3 x Powered DSUB-9, 1 x RJ-45)
	PS/2	1 x Keyboard, 1 x Mouse
	LAN	1 x Gigabit LAN
	VGA	1 x RGB
	Audio	2 ports (1 x Mic-in, 1 x Line-out)
Power	DC-IN	External 60/96W Adapter
		Input AC 100~240V/50~60Hz, Output DC 12V/5A or 6A
User Environment	Temperature	Operating -25℃ to 65℃, Storage -35℃ to 75℃
Size	Dimension	389 x 205 x 322 mm (W x D x H)
	Weight	6.05kg
Optional Peripherals	MSR	ISO 1,2,3 Tracks Reading
	SCR	EMV level 1, 2
	OS	Windows 7, Windows 10, POSReady 7, Windows 10_IOT
	2nd Display	15-inch TFT LCD (1024 x 768), W / LED Back-light (Touch or Non-Touch)
		9.7-inch TFT LCD (1024 x 768), W / LED Back-light (Touch or Non-Touch)
	CDP	VFD (20 columns x 2 lines)
	Dallas	Dallas I-button Reader
	Cash Drawer Port	Serial trigger
	CPU	Intel® Core™ i3-6100U (3M Cache, 2.3 GHz)
		Intel® Core™ i7-6500U (4M Cache, 3.1GHz)



#801-802, Ace High-End Tower 6, 234, Beotkkot-ro, Geumcheon-gu, Seoul, Korea (08513)

Tel + 82-70-7425-9001, Fax + 82-2-6299-5447, URL www.okposkorea.com